

MEOPAR

Addressing Climate Risks for Coastal Transportation Infrastructure

Ewan Moir
President & CEO
Port of Nanaimo



Presentation Outline

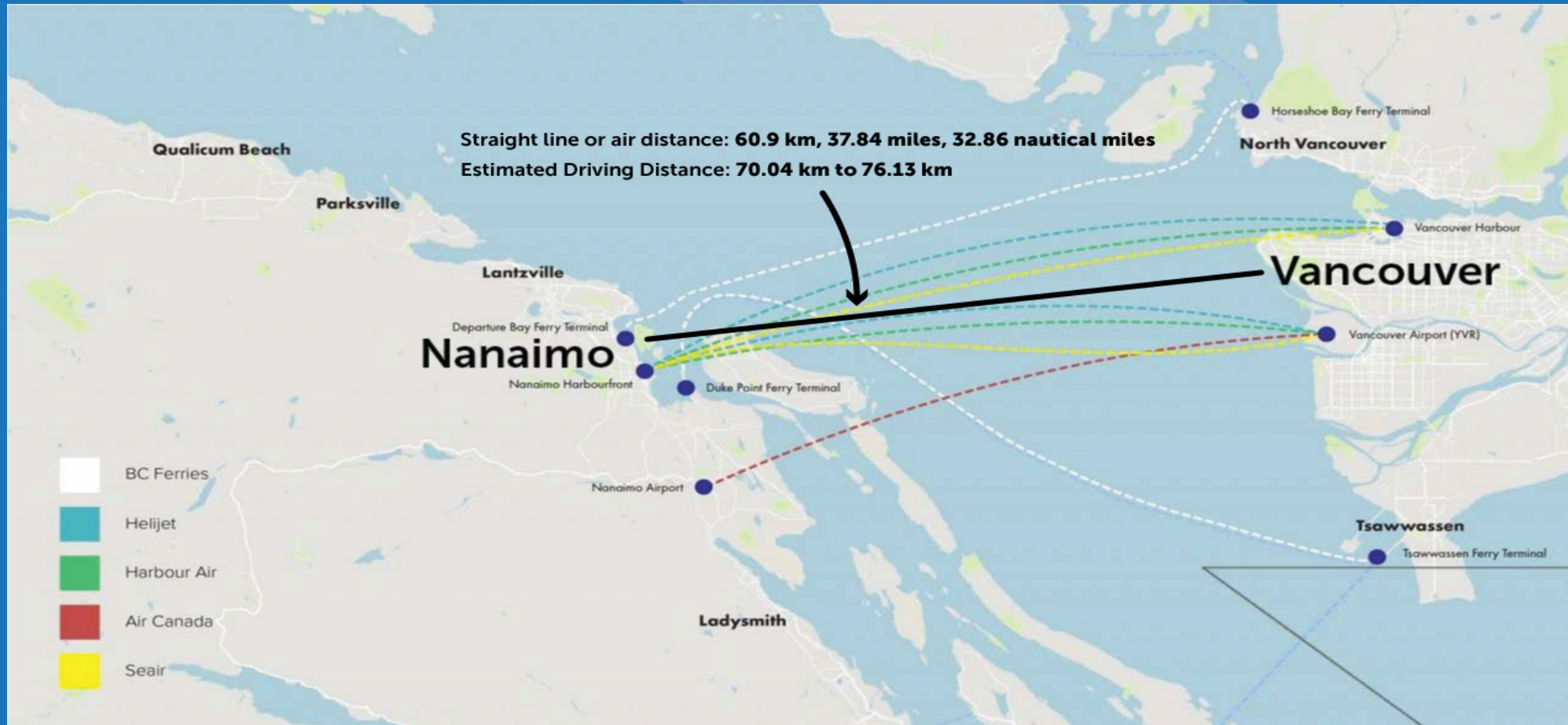
-climate risks for Port of Nanaimo.....
-the plans and policies in place for a potential shutdown during a catastrophic event, and
-the role of the Port of Nanaimo in Vancouver Island's supply chain for critical commodities.....”

Geography

Vancouver Island, BC – Size & Population



Distances from Nanaimo to Vancouver



Nanaimo Waterfront



Climate Risk

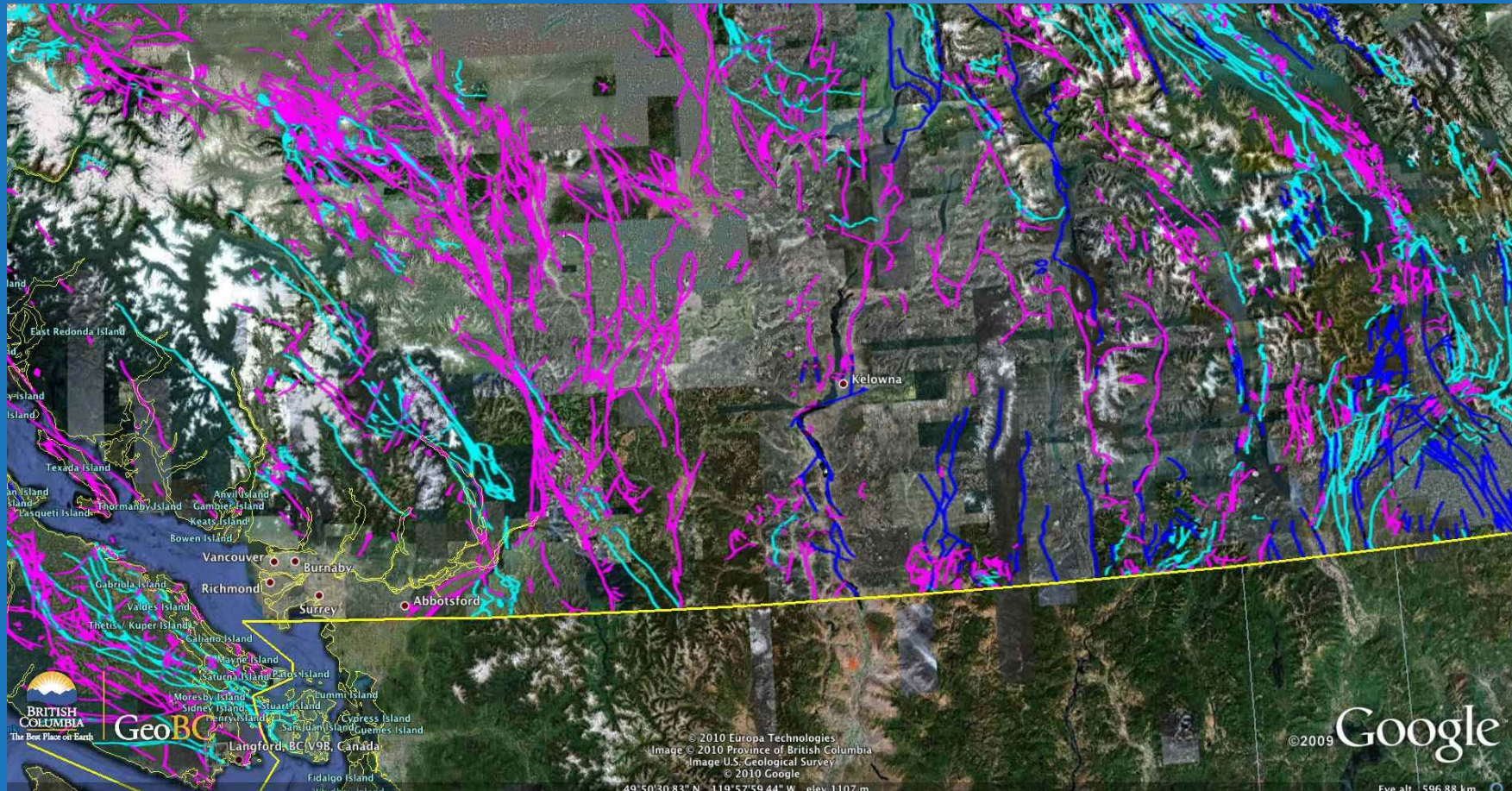
Climate Change



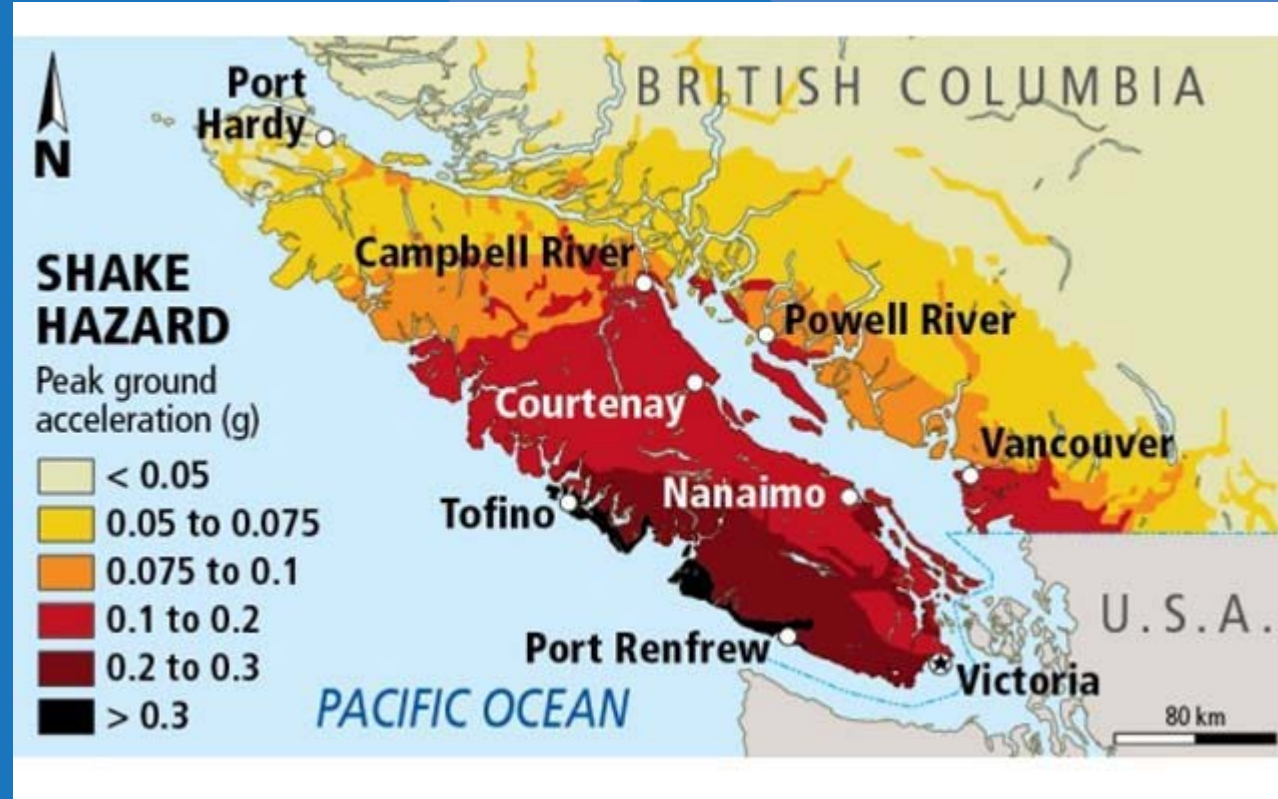
The Guardian (Monday February 23rd):

The Canadian city of Vancouver is the world's tenth most likely city to suffer flooding.

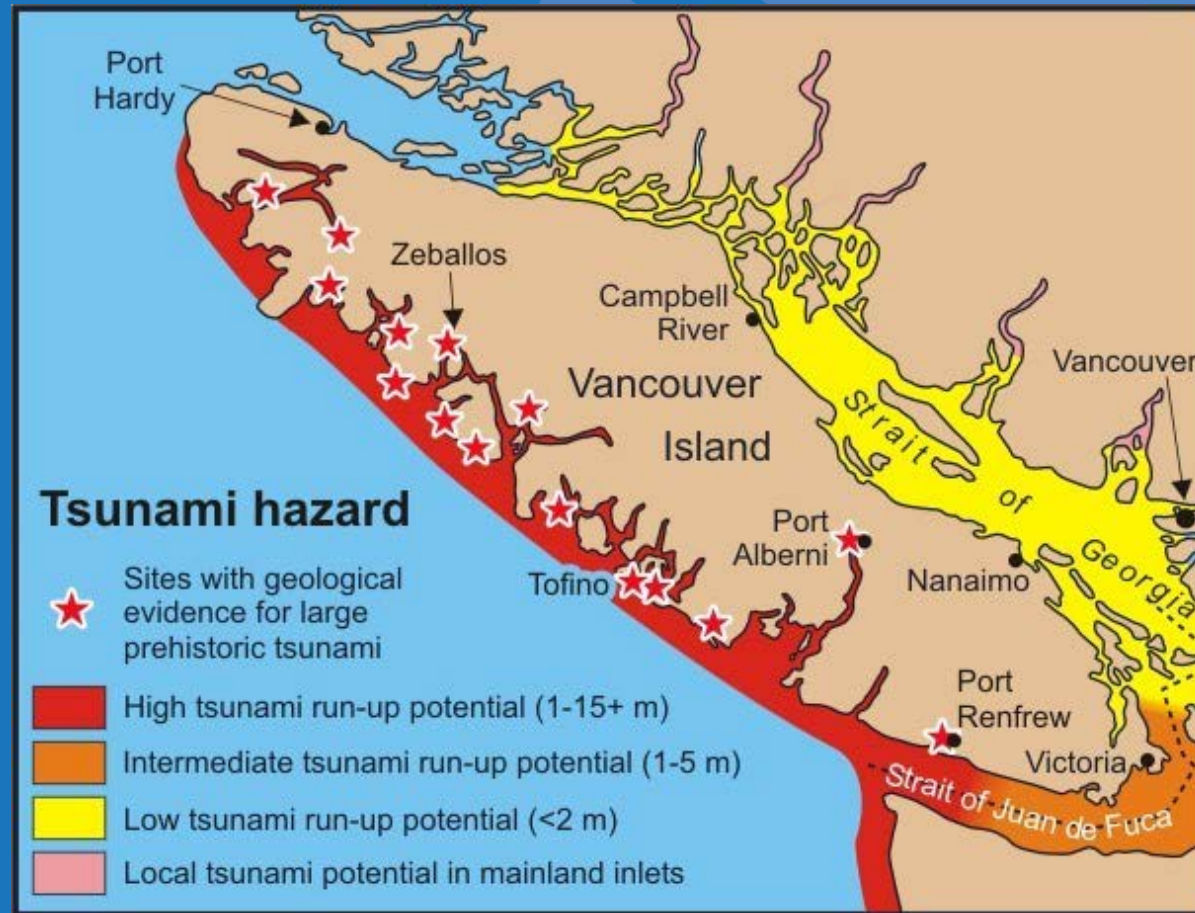
Fault Lines



Shake Hazard



Tsunami Hazard



Plans and Policies

Federal Area of Responsibility



Nanaimo Harbour

Nanaimo Port Authority Managed Lands
Denotes Federal Harbour
Denotes Provincial Harbour

February, 2012



Nanaimo - from the air (looking south)



Marina Basin

Duke Point

Nanaimo Assembly Wharfs (NAW)

Nanaimo – from the air (looking north)



NAW - Berths B and C



NAW – Cruise Terminal



Duke Point



Overarching Priorities

- British Columbia Emergency Management System:
 - Ensure the safety and health of all responders
 - Save Lives
 - Reduce Suffering
 - Protect Public Health
 - Protect Infrastructure
 - Protect Property
 - Protect the Environment
 - Reduce Economic and Social Loss

Plans are in progress:

1. City of Nanaimo - Emergency Response and Recovery Plan (ERRP) in place (January 2018)
2. Nanaimo Airport – ERRP in process
3. Regional District of Nanaimo - *New RDN NEPP Program - Coming Fall 2018*
4. Port of Nanaimo developing a plan aligned with 1, 2 and 3

Nanaimo – Communications in place today



Marina Basin -
UHF

Nanaimo Fire
Department-
UHF

Duke Point
Commissionaires - UHF

Nanaimo Assembly Wharfs (NAW)
Head Office, Harbour Masters Office
and Commissionaire Office - UHF

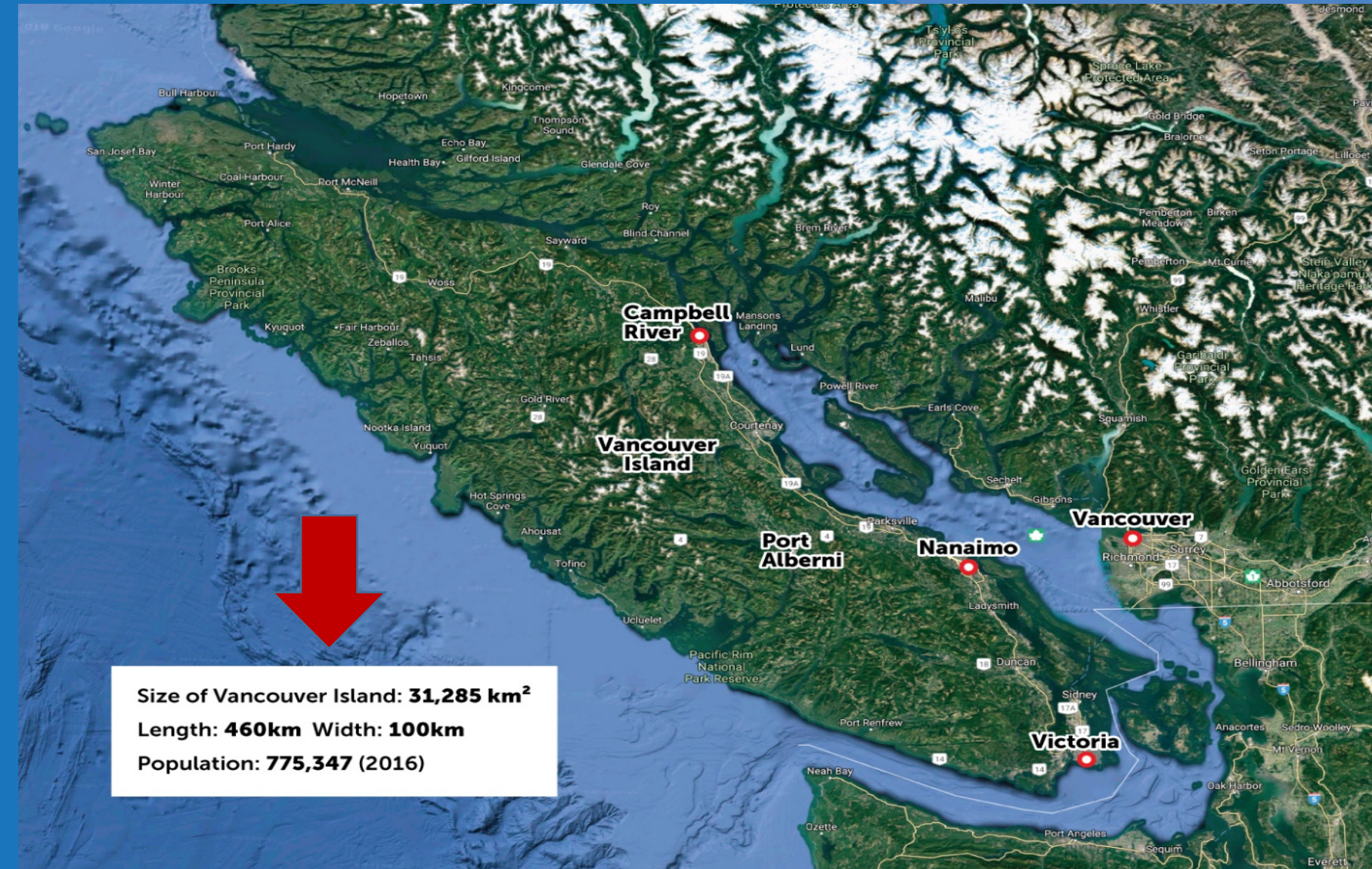
Patrol Craft – VHF and VHF to UHF



Why is our role important?



Vancouver Island, BC – Size & Population



Vancouver Island, BC – Size & Population

Vancouver Island is a
JIT Economy



Size of Vancouver Island: **31,285 km²**
Length: **460km** Width: **100km**
Population: **775,347 (2016)**



Thank You

Ewan Moir
President & CEO
Port of Nanaimo

