

Stories from ten years at the United Nations and Beyond: Building and coordinating an international programs in disaster risk reductions

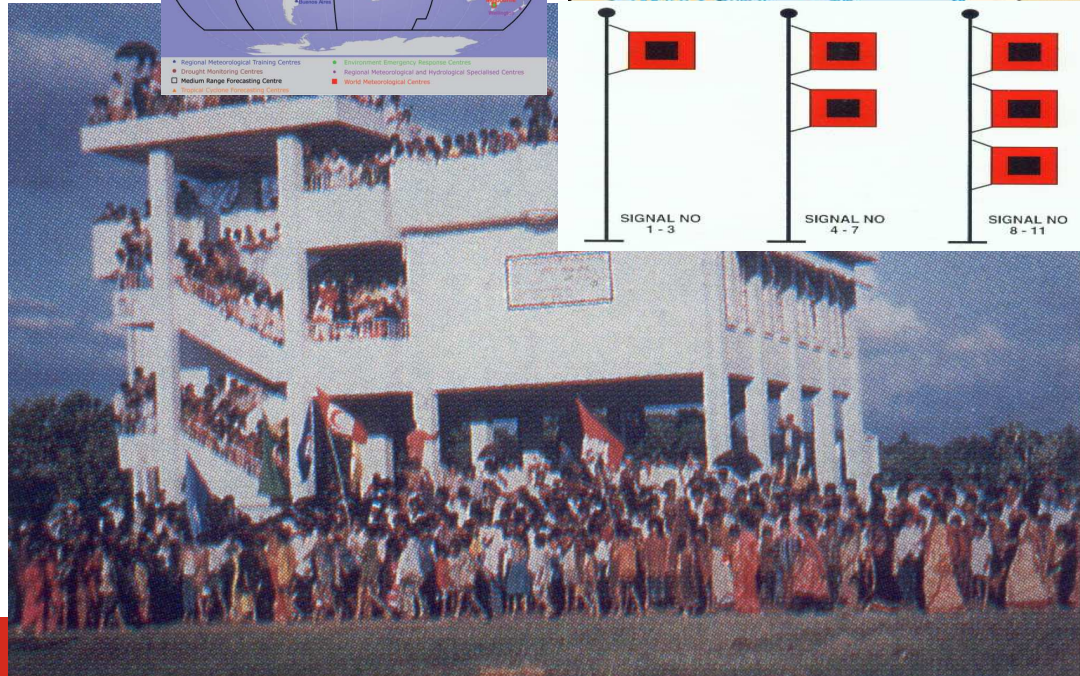
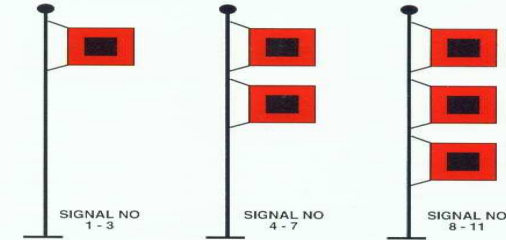
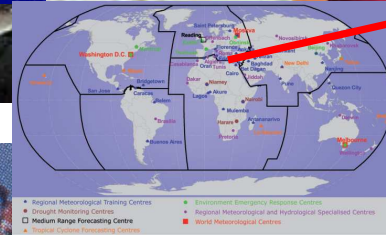
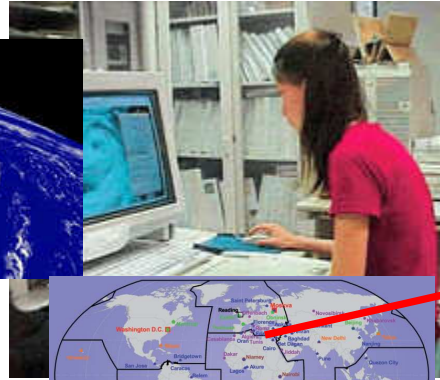
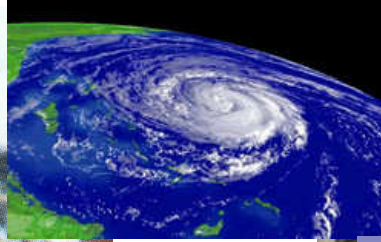
Dr. Maryam Golnaraghi
Director of Extreme Events and Climate Risks
Programme

16 May 2018

Cyclones in Bangladesh



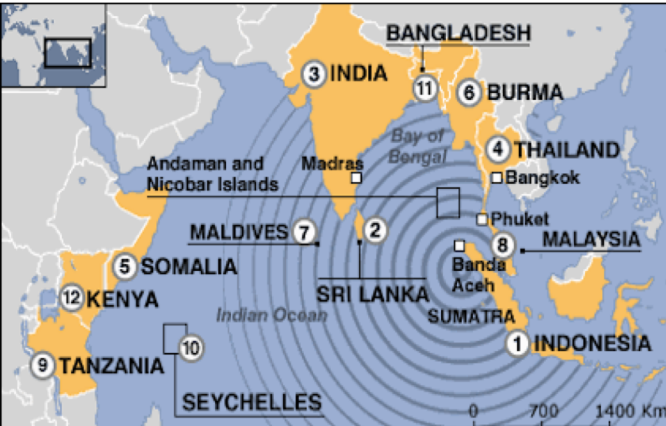
Bangladesh Cyclone Preparedness Programme



2004 Indian Ocean Tsunami



December 25 2004



Reported Deaths:

Est. 230,000

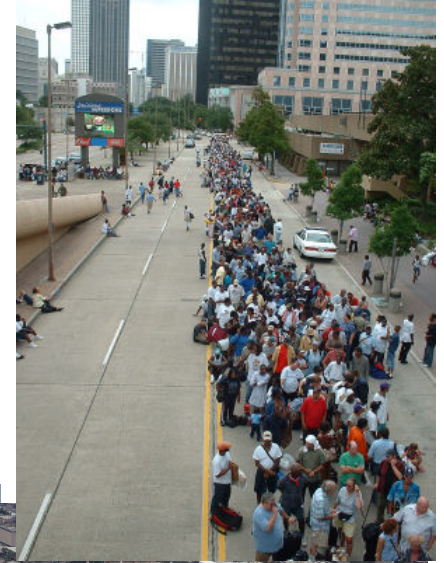
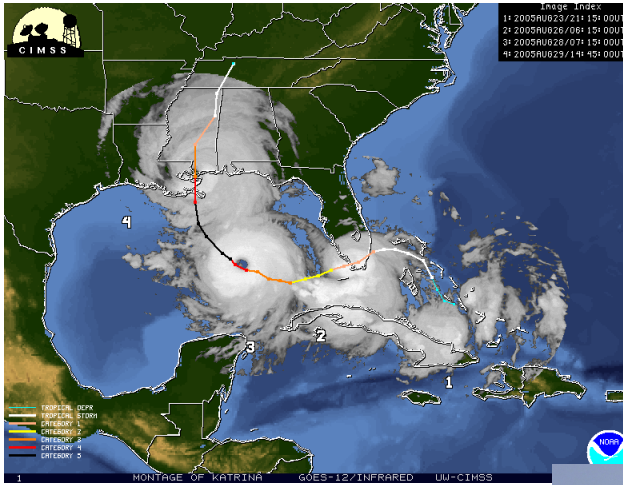
Reported Economic Losses

14 Billion (USD)



Hurricane Katarina

August 2005 Southern USA

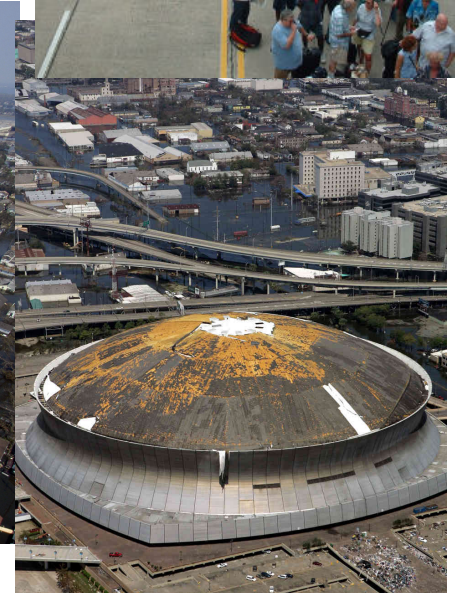


Reported Deaths:

1,833

Reported Economic Losses:

146.9 Billion (USD)



Haiti 2010 Earthquake



12 January 2010

- \ 7.0 Magnitude Quake struck near Port au Prince
- \ 3,500,000 people affected, 220,000 people dead, 300,000+ people injured
- \ 1.5m people became homeless
- \ 4,000 schools were damaged or destroyed
- \ 25% of civil servants in Port au Prince died
- \ half million people lived in tents,
- \ 100,000 at critical risk from storms and flooding
- \ By July 2011 5,899 had died as a result of Cholera outbreak, and 216,000 were infected



Japan Earthquake/Tsunami/Nuclear Accident



11 March 2011

Reported Deaths:

15,833

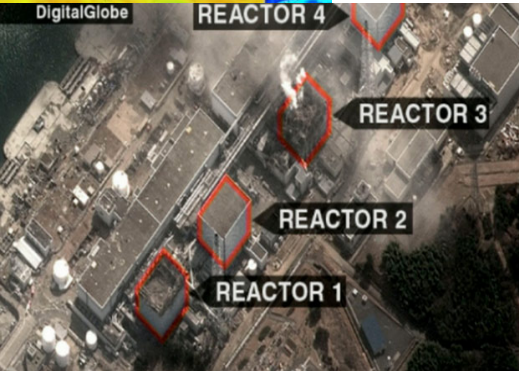
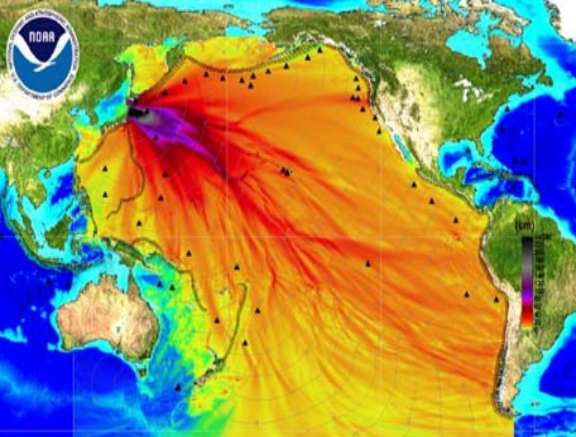
Reported Economic Losses:

Est. 300 Billion



INTENSITY OF EARTHQUAKE
■ Extremely strong
■ Very strong
■ Strong
The rest of country moderate to none

REACH OF TSUNAMI
■ Areas most affected
■ Nuclear plant locations



Hurricane Sandy



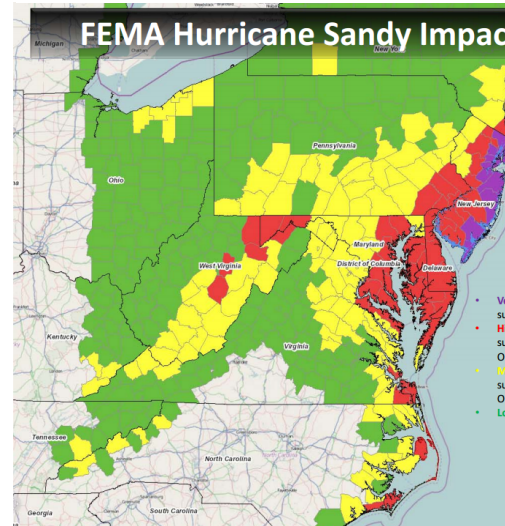
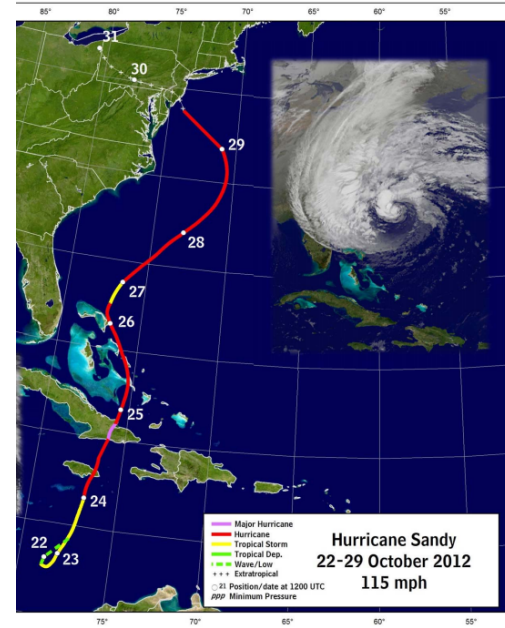
October 2012 – Jamaica, Cuba, Bahamas & Northeastern/Northern United States & Canada

Reported Deaths:

148

Reported Economic Losses

Est. 68 Billion (USD)

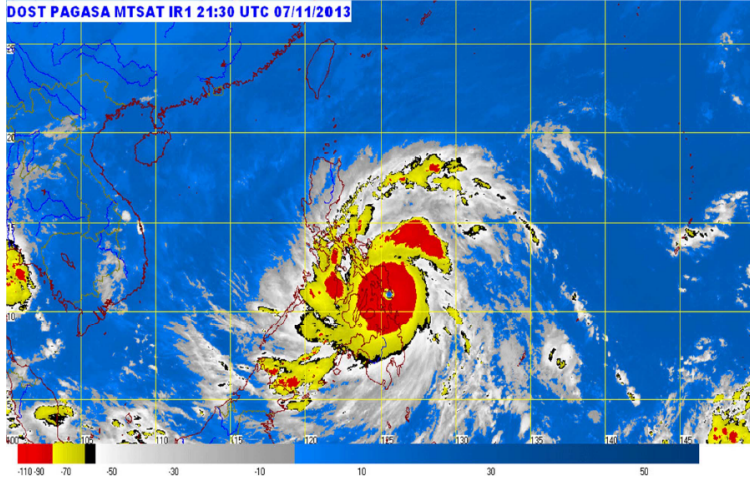


Typhoon Haiyan

November 2013 - Philippines

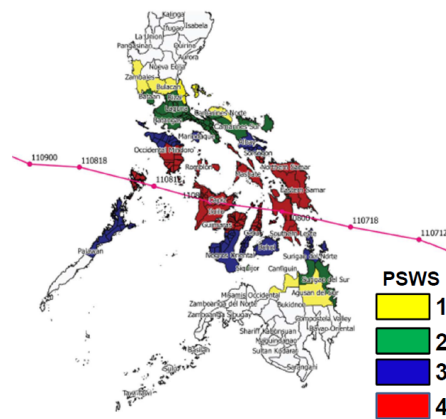
MTSAT ANIMATION NOVEMBER 8-9, 2013

DOST PAGASA MTSAT IR1 21:30 UTC 07/11/2013



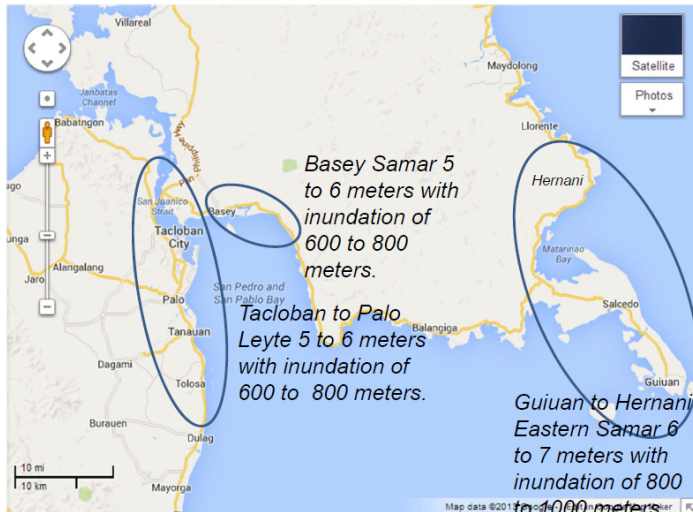
em
l

Typhoon Yolanda (Haiyan)
Public Storm Warning Signals



Reported Deaths:
6,190
Reported Economic Losses:
Est. 5.8 Billion (USD)

Measured storm surge heights
(STORM CHASER Team)



Sub-Saharan Africa Droughts

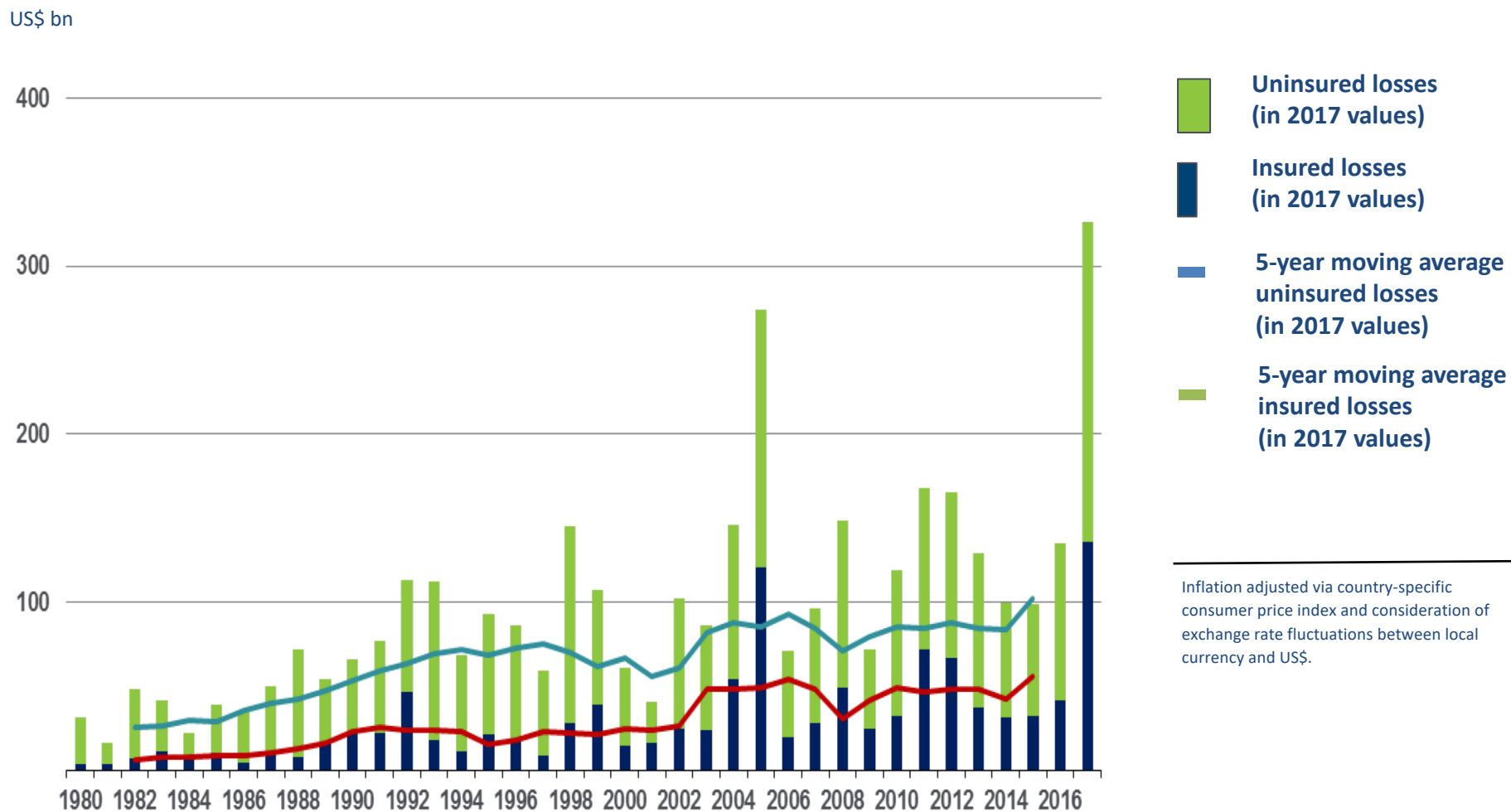


- Drought (reported deaths)
- 1983 Ethiopia (300,000)
 - 1984 Sudan (154,000)
 - 1975 Ethiopia (100,000)
 - 1983 Mozambique (100,000)
 - 1975 Somalia (19,000)

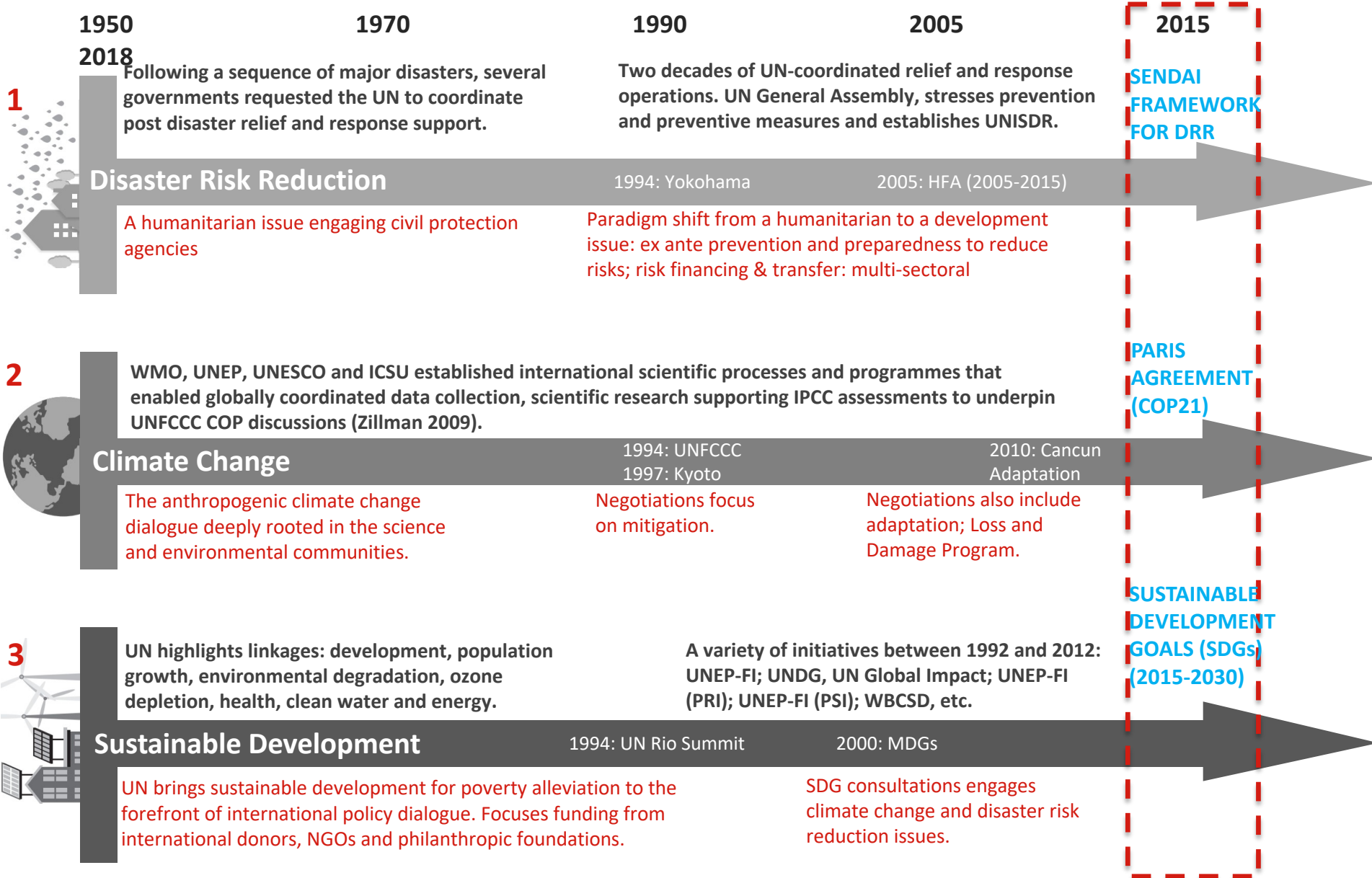


[CLICK HERE FOR RISK MAP EXPLANATION](#)

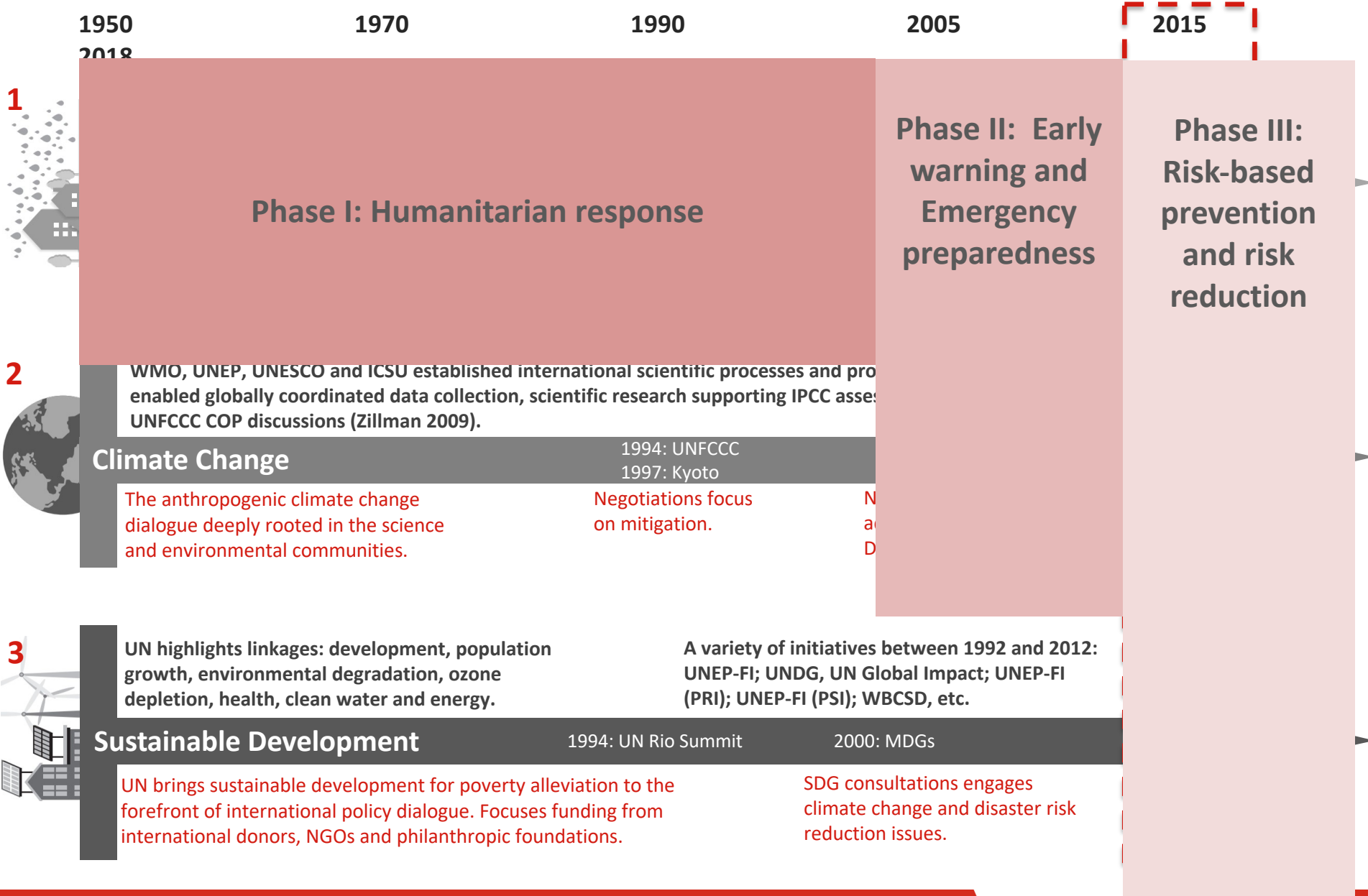
Uninsured and insured losses with 5-year moving average



Six decades of international negotiations - evolutions of disaster risk management – Three distinct phases



Six decades of international negotiations - evolutions of disaster risk management – Three distinct phases



1. Risk Assessment

Modeling
Communication
Risk ownership

2. Risk Reduction and Prevention

- Early Warning Systems and emergency preparedness
- Prevention and Risk Reduction

Policy & regulatory alignment and institutional mechanisms for coordination at national to local levels

3. Risk Financing and risk transfer (Insurance and Alternative Risk Transfer, including insurance)
(Pre-planned financing)

4. Resilience building through smarter reconstruction post event

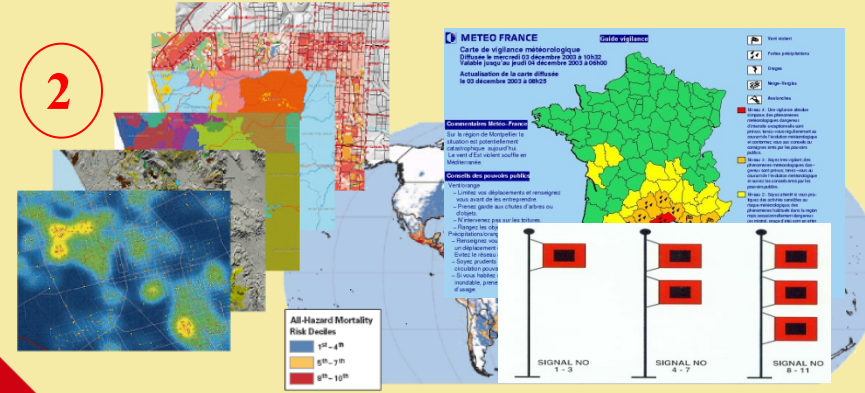
National to local disaster risk reduction plans, legislation and coordination mechanisms



Hazard Data and Forecasts

1

2



Risk Information

**Coordination
and
Collaborations**



**Communication and
Dissemination
Mechanisms**

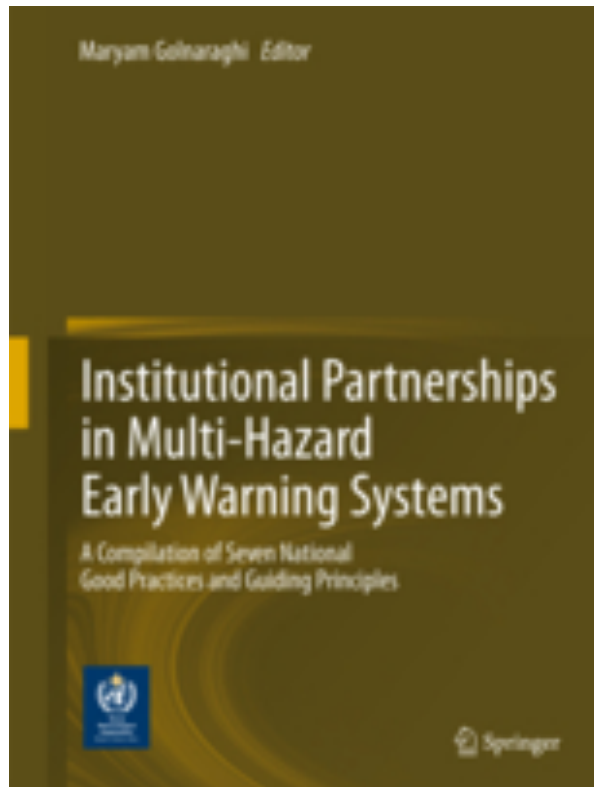
3

4



**Preparedness and
Early Response**

Source: . Golnaraghi, M. (Ed.) “Institutional Partnerships in Multi-Hazard Early Warning Systems: A compilation of Seven National Good Practices and Guiding Principles,” Springer Verlag (2012)

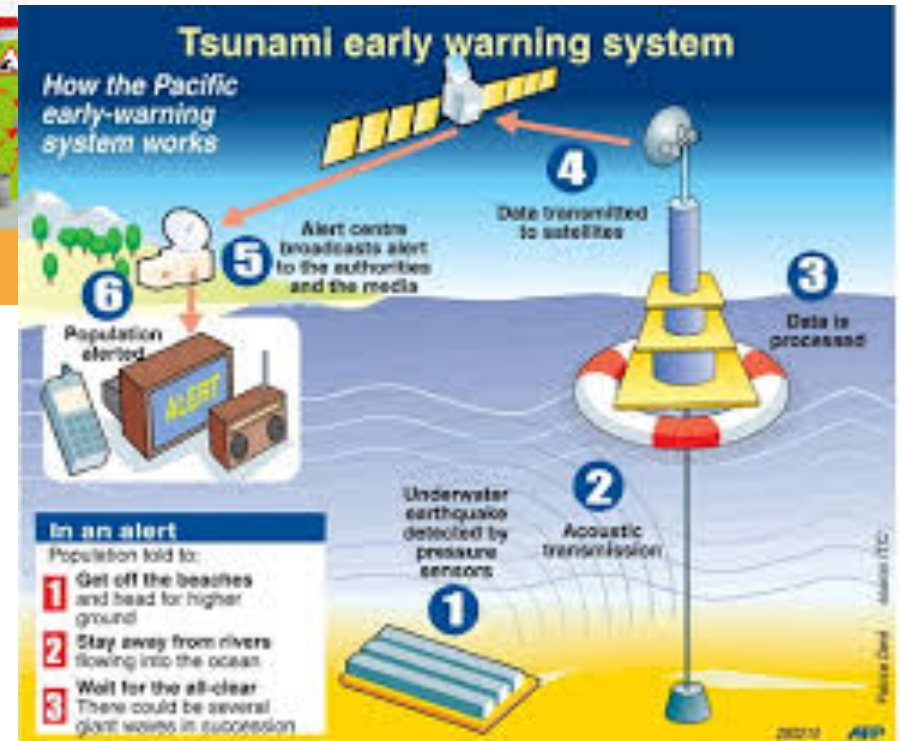
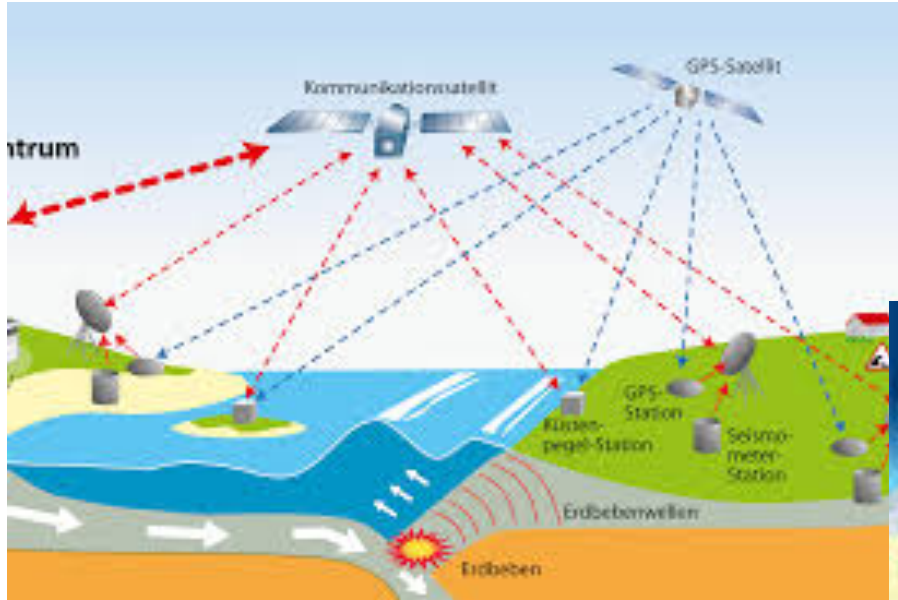


- Bangladesh - Cyclones
- Cuba - Cyclones
- French Vigilance system – Multi-hazard
- Germany – Multi-hazards
- Japan – Multi-hazards
- Shanghai (Mega City) – Multi - Hazard
- USA – Multu - hazard

1. **Political recognition** of the benefits of EWS along with effective planning, legislation and budgeting
2. **Effective EWS are built upon four components:**
 - (i) hazard detection, monitoring and forecasting;
 - (ii) analyzing risks and incorporation of risk information in emergency planning and warnings;
 - (iii) disseminating timely and “authoritative” warnings with clarity on the responsibilities and mandate for issuance of warnings;
 - (iv) community emergency planning and preparedness and the ability to activate emergency plans to prepare and respond
3. **Roles and responsibilities** of all EWS stakeholders and their **collaboration mechanisms clearly defined** and documented (SOPs)
4. **Capacities aligned with resources** across national to local levels (sustainability)

5. Hazard, exposure and vulnerability information are used to carry-out risk assessments at different levels
6. Clear, consistent and **actionable** hazard warnings, with risk information and issued from a **single recognized authoritative source**
7. Timely, reliable, redundant and sustainable warning dissemination mechanisms
8. Emergency response plans targeted to the individual needs of the vulnerable communities, authorities and emergency responders
9. **Regular training and education programmes** in risk awareness and **drills** emergency preparedness and response actions
10. **Effective feedback mechanisms throughout levels** of the EWS for system improvement over time

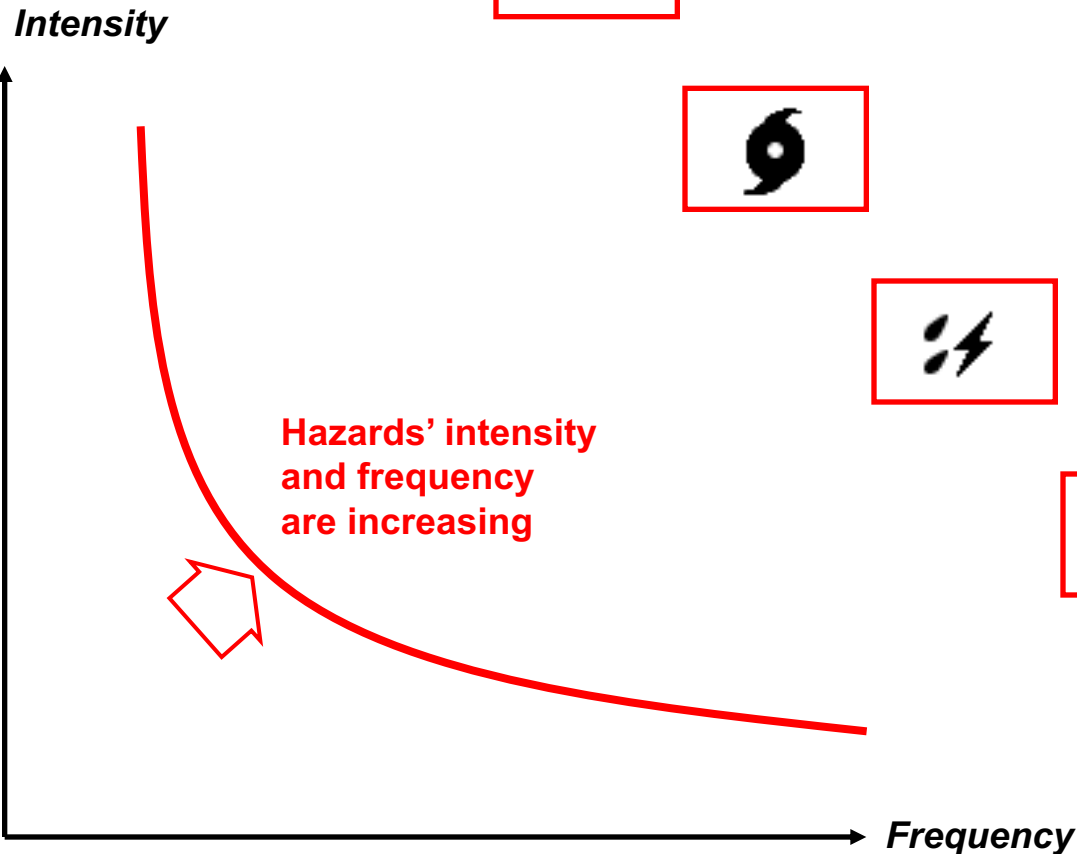
All Countries have access to warnings under 5 minutes



Building on experiences of the insurance industry



Disasters impacts many sectors!

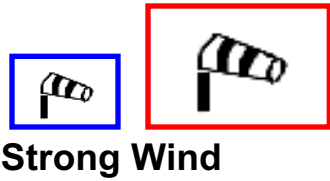


Vulnerability and Exposure on the rise !

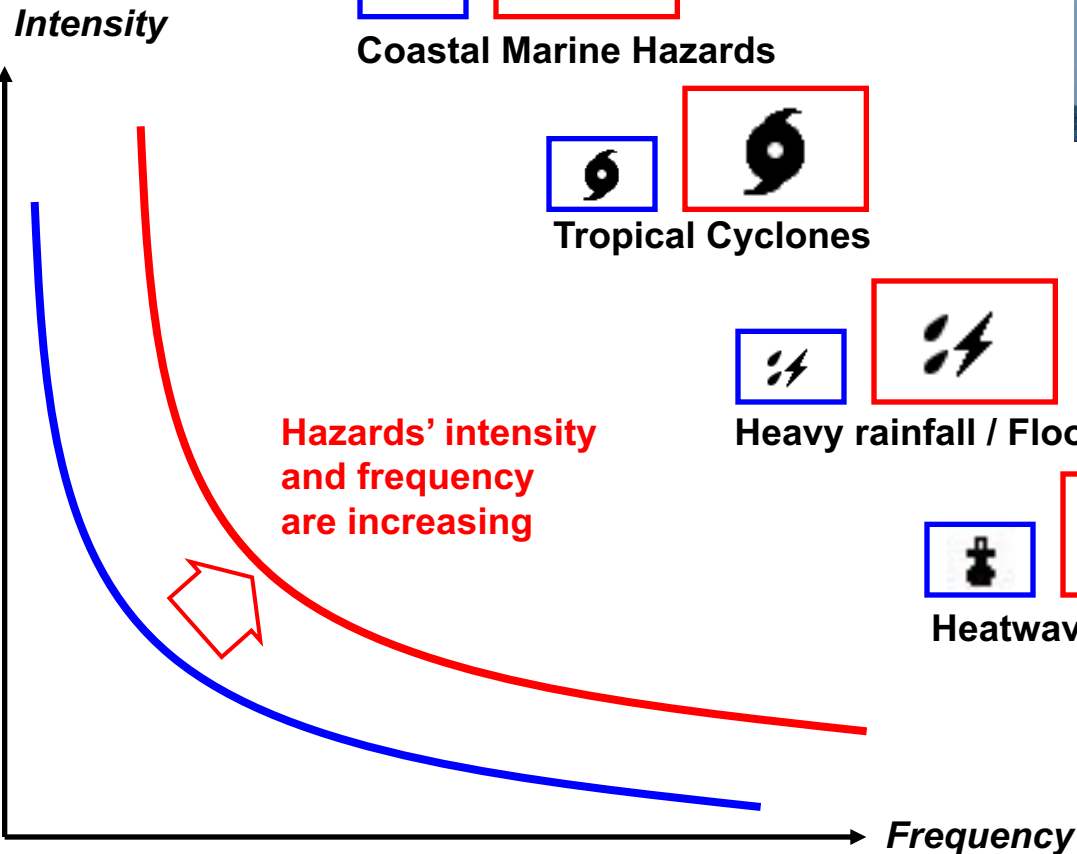
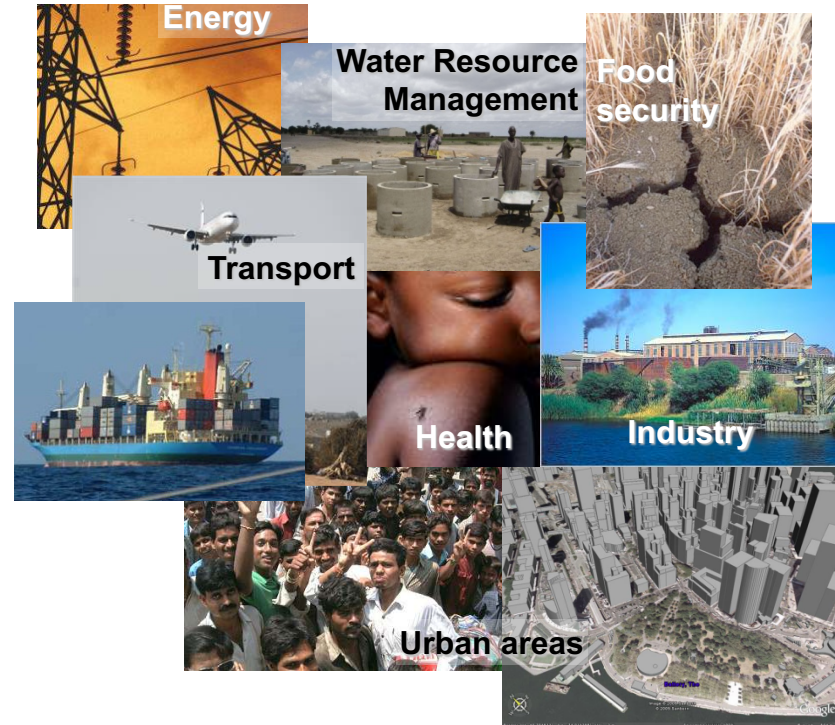
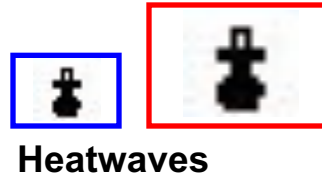
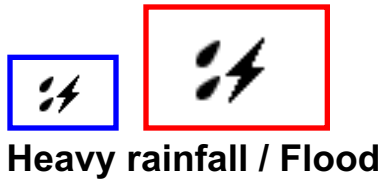
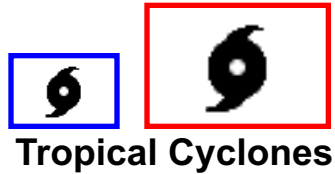


Need for risk-based decision-making

Building on experiences of the insurance industry



Disasters impacts many sectors!

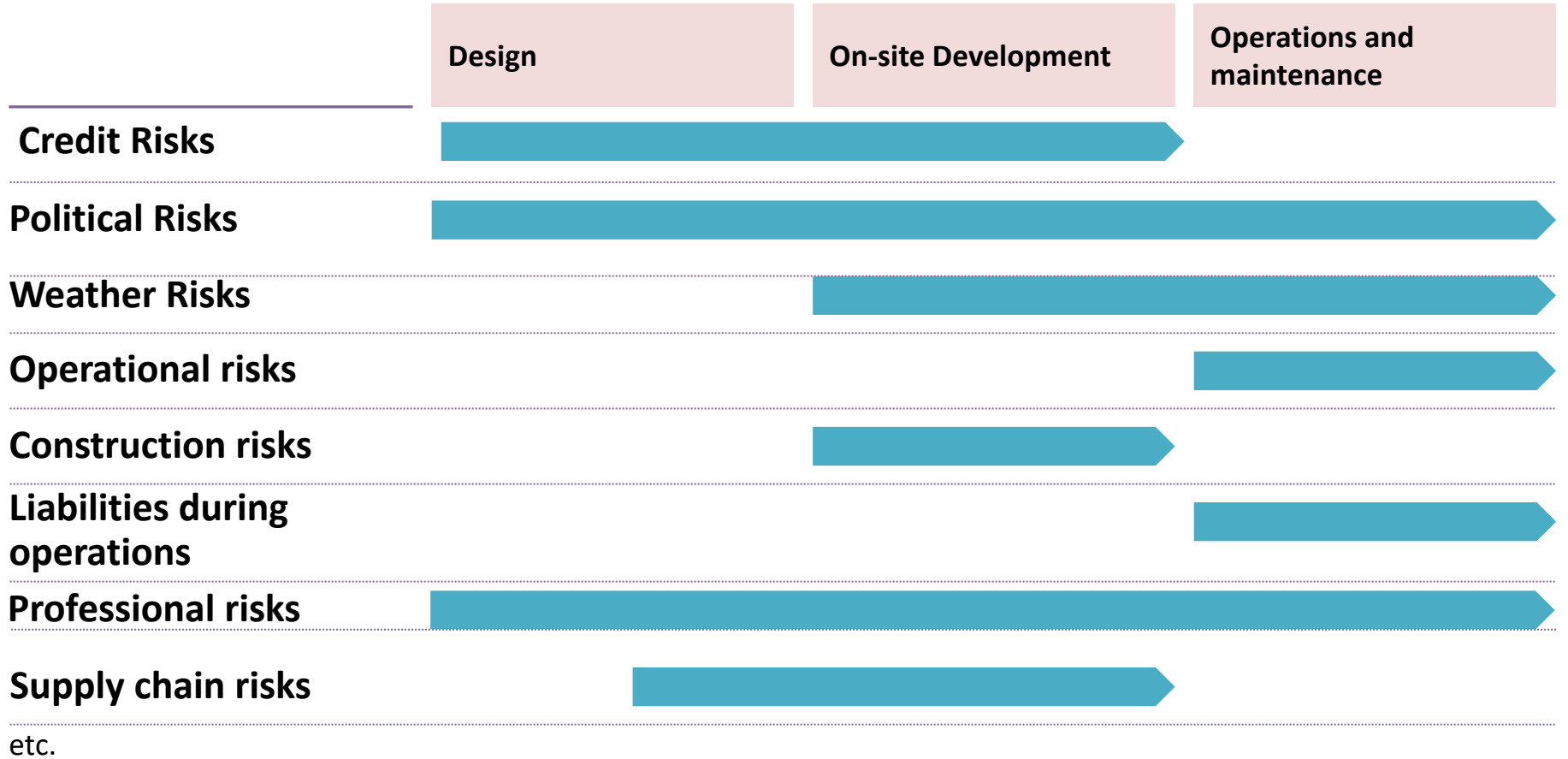


Vulnerability and Exposure on the rise !


↓

Need for risk-based decision-making


Towards a comprehensive approach to managing risks through out the project life cycle - Need for data for the life cycle to assess risk ...




Making critical infrastructure insurable for climate risks

-  **Engaging with the re/insurers** on both non-life and life sides from early stages:
 - Non-life insurance and reinsurance companies – Risk modeling, pricing, underwriting expertise
 - Life insurers as investors

-  **Improving risk assessment and information to support risk management and investment decisions**
 - Systematic data collection

-  **Factoring climate risks** into risk assessment and investment decisions (public/private)
 - Catastrophe and climate risk modeling/ scenario analysis

-  **Enabling infrastructure resilience through** sound policies and regulations that incentivize infrastructure owners/operators to take action

-  **All investments in new infrastructure** should consider both decarbonization and climate resilience

-  **Climate risk disclosure for all stages, need for** common approaches and participation

The Geneva Association 2018 Extreme Event and Climate Risk Forum will examine these issues in more details:

***Pathways to Climate Resilient and decarbonized
Critical Infrastructure in the 21st Century***

A High-Level Dialogue on the Role of the Insurance
Industry and Public-Private Partnerships

**(Co-hosted by Intact Financial Corporation and Sun
Life Financial)**

Date: Tuesday 18 September 2018



CANADA

And Canada?



Many developments underway: Opportunities for cooperation and coordination



Need for an all-of-the-society approach to building resilience to extreme events.



Thank You

Dr. Maryam Golnaraghi

maryam_golnaraghi@genevaassociation.org
mgolnaraghi@golnaraghiandco.com